




Atid Co., Ltd.

AT288N Firmware Update Guide

AT288N Firmware Update Guide

WT,CHOI

2016-08-24


		AT288N Firmware Update Guide					
AT288N Firmware Update Guide					Company	Atid Co., Ltd.	
Doc	Firmware Guide	Writer	WT,CHOI	Date	2016-08-24	Version	v0.1

Version History

Version	Revision Date	Reason ¹	Contents of Revision ²	Author
V0.1	2016-08-24	Draft		WT,CHOI

¹ Revision reason: Compared to the previous file, add, modify or delete the contents of enactment or revision.

² Revision content : States the page umber and changed contents that where to be revised

		AT288N Firmware Update Guide					
AT288N Firmware Update Guide					Company	Atid Co., Ltd.	
Doc	Firmware Guide	Writer	WT,CHOI	Date	2016-08-24	Version	v0.1

목차

목차	3
1 Overview	4
2 Firmware Update	4
2.1 Preparation Material	4
Higher Version of Windows 7 Installed on computer.	4
2.2	4
2.3 Start Firmware Update.....	4

		AT288N Firmware Update Guide					
AT288N Firmware Update Guide					Company	Atid Co., Ltd.	
Doc	Firmware Guide	Writer	WT,CHOI	Date	2016-08-24	Version	v0.1

1 Overview

This guide's purpose is for Firmware of AT288N to user to the update.

2 Firmware Update

For product's function and performance Improvement, some Setup files may have been updated. An error occurred while updating Firmware may failed back up features , please note if who don't have any background idea of SW and HW.

2.1 Preparation Material

Higher Version of Windows 7 Installed on computer.

2.2

- 1 piece of USB2.0 Port(small USB typeB)
- Product AT288N
- Sold together goods Micro USB Cable
- Firmware File(.bin)
- SetupUpdater.msi, Firmware Updater application program(SetupUpdater.msi , manufacturer or supplier)

2.3 Start Firmware Update


- ① Install SetupUpdater.msi to PC (double-click)



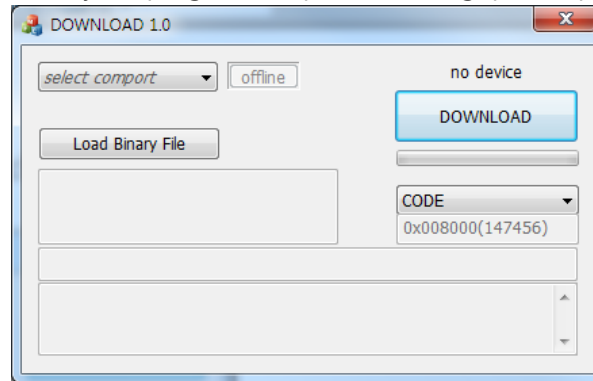
- ② Store Firmware File to specific folder in your PC.

- ③ Run program(fwupdate.exe) Firmware Update

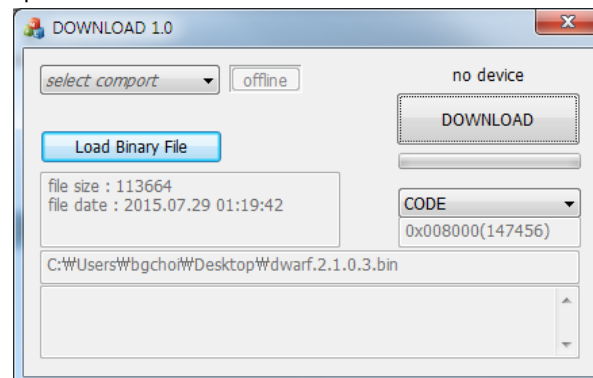


		AT288N Firmware Update Guide					
AT288N Firmware Update Guide						Company	Atid Co., Ltd.
Doc	Firmware Guide	Writer	WT,CHOI	Date	2016-08-24	Version	v0.1

- ④ Once your program is up and running, please press "Load Binary File"




- ⑤ After clicking button "Load Binary File", choosing archive Firmware File in your specific folder



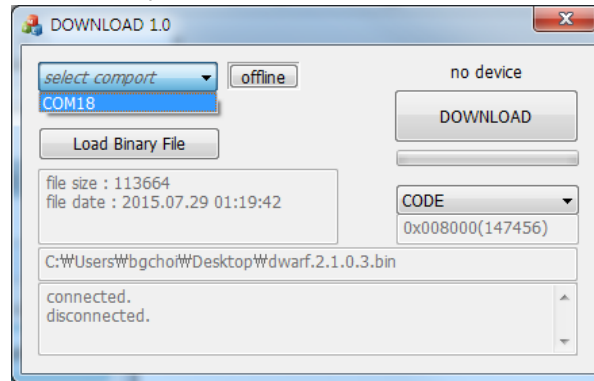
- ⑥ While pushing AT288N's SCAN button(Press power and activate Firmware) Download.(Running AT288N's power-off status)



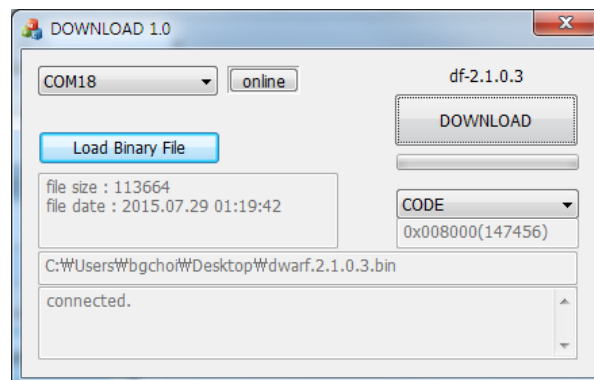
- ⑦ Connect to AT288N's USB cable with PC.

		AT288N Firmware Update Guide					
AT288N Firmware Update Guide					Company	Atid Co., Ltd.	
Doc	Firmware Guide	Writer	WT,CHOI	Date	2016-08-24	Version	v0.1

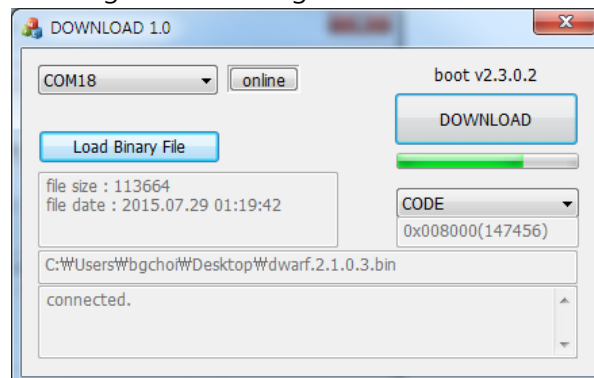
- ⑧ Run setup Device Manager then Check on linked to AT288N's COM port.
- ⑨ "select comport" then select linked to AT288N's COM port.




- ⑩ Push "off line" will be changed "online", showing current product's Firmware version.



- ⑪ Device software has been prepared Firmware Download, press "Download" then begin downloading Firmware.



		AT288N Firmware Update Guide					
AT288N Firmware Update Guide					Company	Atid Co., Ltd.	
Doc	Firmware Guide	Writer	WT,CHOI	Date	2016-08-24	Version	v0.1

- ⑫ After completed done with download, automatically Re-boot new firmware version